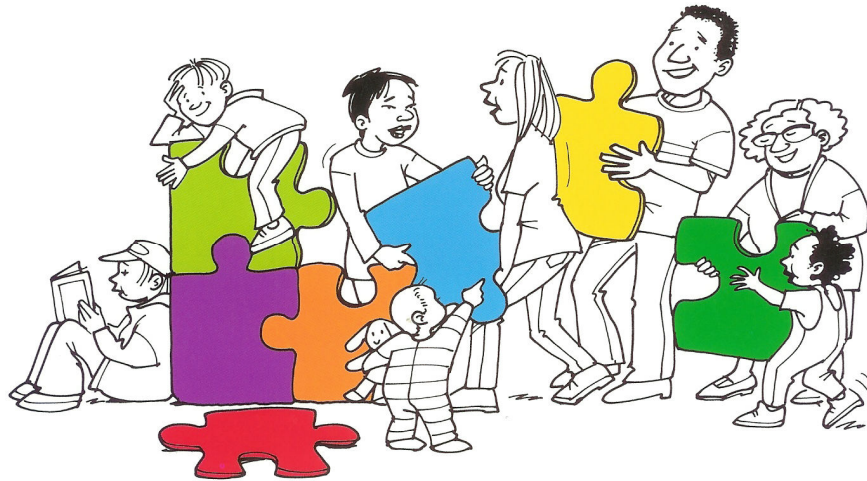


HOW TO GET THE BEST OUT OF FAMILY LIFE



The Parenting Puzzle is a 10 week nurturing programme. Topics include:
Giving praise, family rules and discipline, choice and consequence, raising self esteem, feelings and communication, helping children to stay safe, problem solving and negotiating.

Tuesday 4th May to Tuesday 13th July
7pm - 9pm at Hertford Selections Children's
Centre, Welwyn Rd, Hertford SG14 2DG

For more information and to book a place please
contact Valerie or Siobhan on 01992 581258